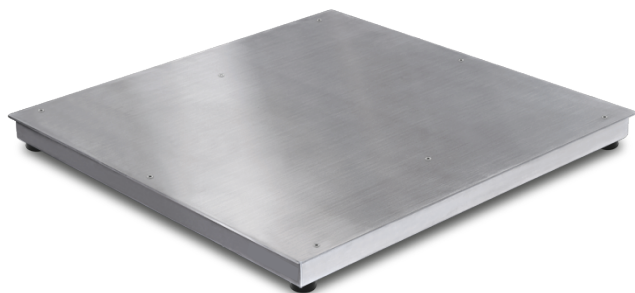


RT STAINLESS STEEL FLOOR SCALE



Low profile STAINLESS STEEL electronic platforms with removable loading plate. Fitted with IP68 STAINLESS STEEL load cells. Suitable for creating scales and electronic weighing systems for all types of industrial and commercial applications.

Indicator Features

- Stainless steel display device with IP67 protection (only BWS) and superior display size Flexible positioning, e.g free-standing or mounted to the wall
Full function: unit change, accumulation, checkweighing, simply counting, Gross/Net shift.
- Weighing with tolerance range (check - weighing) a visual and audible signal helps with portioning, dispensing or grading Hold function: When the weighing conditions are unstable, a stable weight is calculated determining an average value RS-232 interface can connect to PC or printer.
- Display : LCD display, digit height 52 mm. with white color LED backlight
- Power : AC adapter (12V500mA), rechargeable battery (lead acid battery 6V/4Ah), operation time 70 hours
- Operation temperature : 100C/400C



Technical Features

- Fitted with 4 STAINLESS STEEL shear-beam OIML approved load cells each with 1000 Ohm input resistance with protection against dust and immersion according to IP68 standards.
- Stainless steel bearing tubular structure, with stainless steel plate and IP67 junction box housing.
- Adjustable, stainless steel shock-proof jointed feet and level.
- Up to 15 Vdc power supply.

Available Options

Dimensions (cm)	Range
1m x 1m	300Kg - 2000Kg
1.5m x 1.5m	1000Kg - 5000Kg
2m x 2m	2000Kg - 6000Kg

- Customized sizes will be manufactured on request basis

