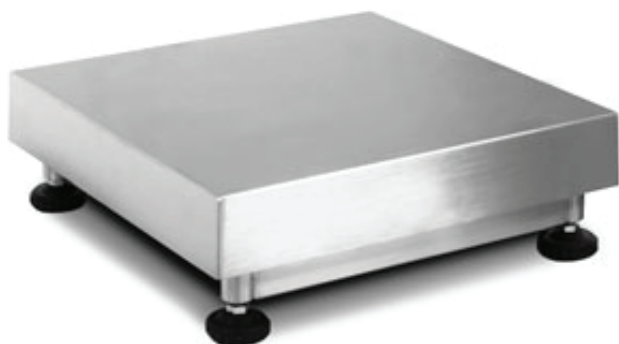


RT STAINLESS STEEL PLATFORM SCALE



Small and medium capacity electronic platforms with a stainless steel surface having a precise and sturdy structure. Suitable for creating scales and automatic weight checking systems for all industrial and commercial applications. The standard version is provided with approved load cell.

Indicator Features

- Stainless steel display device with IP67 protection (only BWS) and superior display size Flexible positioning, e.g free-standing or mounted to the wall
Full function: unit change, accumulation, checkweighing, simply counting, Gross/Net shift.
- Weighing with tolerance range (check - weighing) a visual and audible signal helps with portioning, dispensing or grading Hold function: When the weighing conditions are unstable, a stable weight is calculated determining an average value RS-232 interface can connect to PC or printer.
- Display : LCD display, digit height 52 mm. with white color LED backlight
- Power : AC adapter (12V500mA), rechargeable battery (lead acid battery 6V/4Ah), operation time 70 hours
- Operation temperature : 100C/400C



Technical Features

- Functions with a "single point" 350 Ohm aluminium load cell, in stainless steel hermetic cover, approved according to OIML R60 C3 standards (3000 divisions), IP65 protection degree.
- Stainless steel tubular structure, with adjustable resting feet and level.
- Fitted with stainless steel loading surface.
- Up to 15 Vdc power supply.
- 3m shielded cable for connection to the indicator.
- Upon request:
 - platform calibration service with weight indicator;
 - 3000e CE-M approval, to be combined always to the calibration service;
 - support column for indicator.

Available Options

Dimensions (cm)	Range
30 x 30cm	3 - 15 Kg
30 x 40cm	30 - 100 Kg
40 x 40cm	30 - 150 Kg
60 x 60cm	60 - 300 Kg

- Customized sizes will be manufactured on request basis

